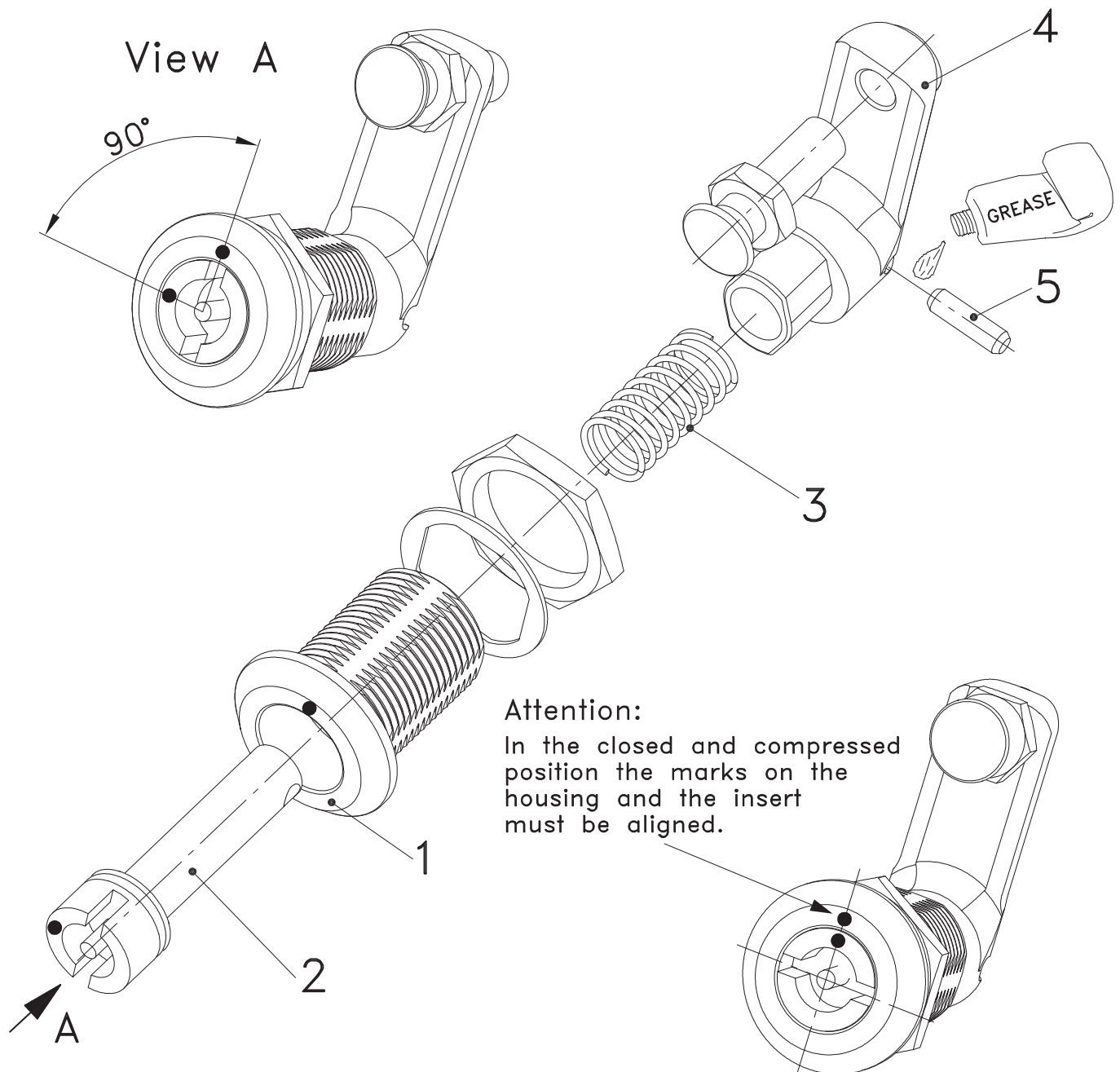


Explanation 4: Typical Assembling for Compression Latch

see product system 1-081



- A) Install housing (1) with the mark into direction of the frame.
- B) Enter insert with fitted O-Ring (2) from the front. Make sure that the mark on the insert is positioned 90° counterclockwise to the mark on the housing.
- C) Slide spring (3) and cam (4) over the insert from the inside. (cam in the direction of the frame)
- D) Push cam (4) against the spring pressure and fit pin (5).
- E) Pin (5) and curve slopes **MUST** be greased generously.
- F) Install rest of hardware.